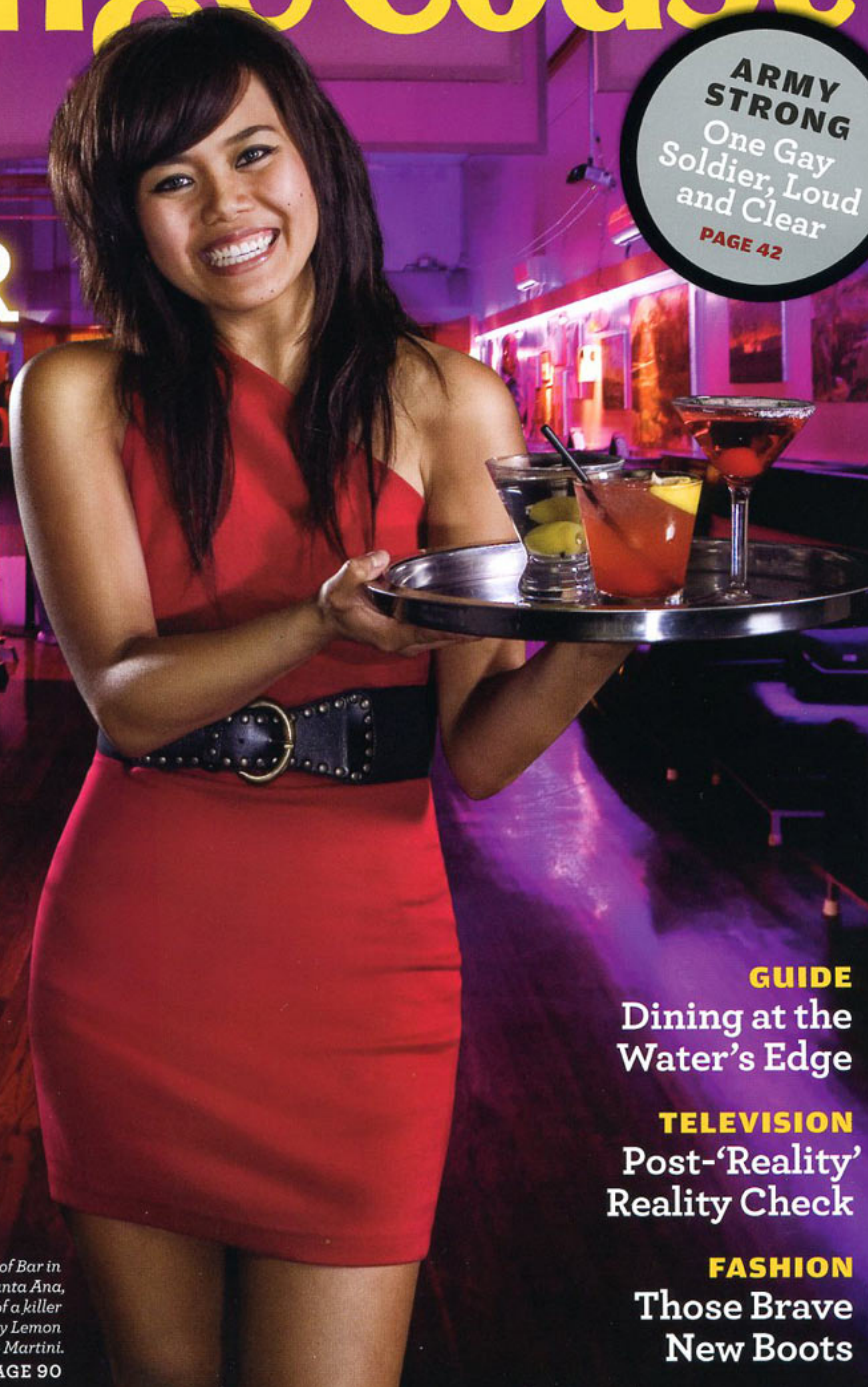


A SURFING LEGEND Lisa Andersen's Next Chapter

Orange Coast

O.C.
AFTER
DARK

ARMY STRONG
One Gay Soldier, Loud and Clear
PAGE 42



Sunset doesn't just end the day here. It starts the fun!

- HIPSTER BOWLING**
- LOBSTER DIVING**
- RETRO LOUNGES**
- LIVE MUSIC**
- NIGHT SURFING**
- DANCE CLUBS**
- LATE-NIGHT BITES**
- WINE BARS**
- COFFEEHOUSES**
- ICE SKATING**

GUIDE
Dining at the Water's Edge

TELEVISION
Post-'Reality' Reality Check

FASHION
Those Brave New Boots

NOVEMBER 2009 \$4.95
1 1 >
0 74820 66746 0

Proof Bar in Santa Ana, home of a killer Raspberry Lemon Drop Martini.
PAGE 90

BEST SPECIAL SPACE DESIGN
Platinum Award



Richard McCormack, ASID
Designed while at
Cheesecake Factory
Richard McCormack Design
3186-A Airway Avenue
Costa Mesa
877.217.7717
richardmccormackdesign.com



(ABOVE) Surrounding retail shops, a secluded entry, and an unusual building footprint were just a few of the challenges in this restaurant renovation for the Cheesecake Factory. Light, sound, and water decompress guests, while imported aged limestone floors, custom Chinese cabinetry and distressed millwork give the restaurant a distinct Southeast Asian flavor.

(BELOW) Creating a distinct retail space for a couture bridal line that was sophisticated, welcoming, and easily recreated in other locations was difficult on a tight budget and with a prominent structural column that needed to be incorporated into the design. A curtain of crystals illuminated above, glass beaded wall coverings, and floor to ceiling drapery defined dressing rooms radiate from the column to make it the store's focal point.



BEST SPECIAL SPACE DESIGN
Gold Award



Richard McCormack, ASID
Richard McCormack Design
3186-A Airway Avenue
Costa Mesa
877.217.7717
richardmccormackdesign.com